

RESEARCH ARTICLE

Installing chainsaw-carved hollows in medium-sized live trees increases rates of visitation by hollow-dependent fauna

Stephen R. Griffiths^{1,2} , Kristin Semmens¹ , Simon J. Watson^{1,3}, Christopher S. Jones⁴

Anthropogenic disturbance has resulted in a global reduction in the abundance of mature, hollow-bearing trees. Nest boxes have long been used to provide supplementary shelter sites in revegetated and regenerating landscapes, but limitations in their effectiveness when offsetting the loss of mature trees has led to increased interest in novel designs of artificial hollows. For example, mechanically excavating cavities into the trunk or branches of trees. However, the effectiveness of artificial hollows in attracting wildlife to visit small- or medium-sized, growing trees in human-disturbed landscapes has received little attention. In this study, we installed chainsaw hollows that were designed for small, hollow-dependent mammals and birds into the trunks of live medium-sized trees. We conducted a before-after control-impact experiment using passive camera traps to monitor changes in visitations by wildlife to (1) mature hollow-bearing trees, (2) developing trees without hollows (i.e. control trees), and (3) developing trees with newly installed chainsaw hollows. We found that, compared to large hollow-bearing trees and control trees, the developing trees that were selected for chainsaw hollow construction showed the greatest visitation rates by hollow-dependent wildlife (i.e. number of visits) during the “post-impact” surveys. Our results suggest that chainsaw hollows designed to replicate the external physical characteristics of natural tree hollows could be effective in attracting target hollow-dependent fauna to developing trees in regenerating and revegetated landscapes. Further studies are required to compare the effectiveness of natural hollows, chainsaw hollows, and nest boxes when deployed in a range of human-disturbed landscapes.

Key words: activity, artificial tree hollow, BACI, biodiversity offset, habitat restoration, nest box, supplementary shelter sites

Implications for Practice

- Retaining mature hollow-bearing trees should be a primary management objective for the conservation of hollow-dependent wildlife.
- Chainsaw hollows may facilitate improved outcomes of revegetation and restoration programs by reducing the amount of time it takes hollow-dependent wildlife to find newly installed supplementary hollows.
- Attraction of hollow-dependent fauna to developing trees after chainsaw hollow installation may result in reduced competition for the natural tree hollows that remain in human-disturbed landscapes.

Introduction

Anthropogenic disturbance has resulted in a global reduction in the abundance of mature hollow-bearing trees (McBride & Jacobs 1986; Lindenmayer & Laurance 2017; Liu et al. 2019). Countless invertebrate and vertebrate species worldwide are reliant upon the availability of tree hollows (Cockle et al. 2010; Hussain et al. 2013; Warakai et al. 2013; Carvalho et al. 2014;

Quinto et al. 2014). Consequently, the conservation of mature trees is critical for the survival and ongoing viability of many hollow-dependent species within human-disturbed landscapes (Newton 1994; Lindenmayer et al. 2015). Despite wide-scale revegetation, the natural development of hollows within newly planted trees will not occur fast enough to offset the ongoing loss of mature trees caused by activities such as land clearing for agriculture, logging, and urban expansion (Manning et al. 2006; Munks et al. 2009; Fischer et al. 2010). Furthermore, the naturally occurring hollows that persist in urban landscapes are under continued pressure due to managed tree pruning and removal implemented by land managers to reduce risks of falling limbs harming people or property (Le Roux et al. 2014; Treby & Castley 2015). Significant time lags (e.g. at least

Author contributions: KS, SRG contributed equally to this work.

¹Department of Ecology, Environment and Evolution, La Trobe University, Bundoora, 3086, Victoria, Australia

²Address correspondence to S. R. Griffiths, email s.griffiths@latrobe.edu.au

³Policy and Planning Division, Department of Environment, Land, Water and Planning, East Melbourne, 3002, Victoria, Australia

⁴Department of Environment, Land, Water and Planning, Arthur Rylah Institute for Environmental Research, Heidelberg, 3084, Victoria, Australia

© 2020 Society for Ecological Restoration

doi: 10.1111/rec.13191

Supporting information at:

http://onlinelibrary.wiley.com/doi/10.1111/rec.13191/supinfo

100 years) are therefore likely to occur before revegetation programs implemented in disturbed landscapes can support viable populations of hollow-dependent faunal communities (Bennett et al. 1994; Vesk & Mac Nally 2006; Vesk et al. 2008).

Artificial hollows, such as nest boxes, are often used to provide supplementary shelter sites in revegetated and regenerating landscapes (Lambrechts et al. 2010; Mering & Chambers 2014; Goldingay et al. 2018). However, limited research has been undertaken to investigate the effectiveness of habitat supplementation techniques in attracting wildlife to visit small- or medium-sized, growing trees (hereafter, “developing trees”) in human-disturbed landscapes. Le Roux et al. (2015) showed that visitation rates of hollow-dependent fauna to newly installed nest boxes can be affected by the size of the tree on which the boxes are attached, with boxes on small trees being less effective than those on large trees. Where nest boxes are deployed in revegetated or regenerating landscapes dominated by developing trees, such as urban and peri-urban parks and reserves, they may prove to have limited effectiveness in attracting hollow-dependent fauna, and ultimately in providing supplementary shelter sites (Le Roux et al. 2015, 2016; Griffiths et al. 2017). Further research is therefore required to investigate the efficacy of incorporating novel types of artificial hollows into conservation management and biodiversity offset programs (Rueegger 2017; Griffiths et al. 2017, 2017, 2018).

One habitat supplementation technique that is currently increasing in popularity across southeastern Australia involves the mechanical excavation of artificial cavities by cutting into the trunk or branches of trees with a chainsaw (hereafter “chainsaw hollows”; Griffiths et al. 2018). Few studies have tested the effectiveness of artificially excavated tree hollows, most of which have not reported initial responses in wildlife visitation rates after construction (see Table S1). Despite such methods proving to be an effective tool in conservation programs targeting threatened hollow-dependent wildlife, e.g. the red-cockaded woodpecker (*Leuconotopicus borealis*; Cox & McCormick 2016), they have not been widely adopted in landscape restoration or biodiversity offset programs (Griffiths et al. 2018).

Chainsaw hollows can be designed to closely mimic the physical characteristics of natural tree hollows that are used by target fauna, such as the size and shape of the entrance hole and the dimensions of the internal cavity (Saenz et al. 2001; Hurley & Harris 2014; Zapponi et al. 2014; Cox & McCormick 2016; Rueegger 2017; Griffiths et al. 2018). However, it is unclear whether installing artificial shelters designed to replicate the physical characteristics of natural tree hollows could result in increased tree visitations by hollow-dependent fauna. As the provision of chainsaw hollows as supplementary shelters is still in its relative infancy, particularly in the Southern Hemisphere, further empirical studies are needed to determine how fauna respond to the creation of chainsaw hollows.

Here, we investigate the behavioral response of hollow-dependent wildlife to the installation of chainsaw hollows into the trunks of live, developing trees located in urban and peri-urban parks and reserves across Greater Melbourne, Victoria, southeastern Australia. We created chainsaw hollows that were designed for small marsupial gliders (e.g. *Petaurus* spp.) or

small hollow-nesting birds (e.g. Musk Lorikeet *Glossopsitta concinna*, Little Lorikeet *Parvipsitta pusilla*). However, minor variations to the entrance size and internal dimensions could make these supplementary shelters suitable for a range of other hollow-dependent arboreal mammals, tree-roosting insectivorous bats and secondary cavity-nesting passerines (Newton 1994; Kunz & Lumsden 2003; Goldingay et al. 2015). In this study, we posed the question: can the introduction of chainsaw hollows increase the visitation by hollow-dependent fauna to developing trees? We hypothesized that the addition of chainsaw hollows to developing trees would increase the activity of hollow-dependent fauna (measured as daily rates of visitation to trees), particularly immediately after hollow creation, as animals investigate these novel habitat structures as possible shelter sites (Lumsden et al. 2016). To test this hypothesis, we conducted a before-after control-impact (BACI) chainsaw hollow addition experiment and used passive camera traps to monitor changes in visitations by hollow-dependent wildlife to (1) mature hollow-bearing trees, (2) developing trees without hollows (i.e. control trees), and (3) developing trees with newly installed chainsaw hollows. This study provides a preliminary insight into the potential for chainsaw hollows to augment the habitat value that developing trees could provide for hollow-dependent fauna in human-disturbed landscapes. Our study was designed for specific relevance to managers of urban and peri-urban parks and reserves, which are increasingly being targeted for restoration and revegetation activities (Shanahan et al. 2011; Archibald et al. 2017).

Methods

Study Site

The response of hollow-dependent fauna to the installation of chainsaw hollows in live *Eucalyptus* trees was examined at five public reserves located across Greater Melbourne, in southeastern Australia: Burke Road Billabong Reserve, The Briars, Woods Bushland Reserve, Warringine Creek, and Warringine Park (Fig. 1). Reserve selection was based on support from land managers (e.g. local councils), the known or likely presence of target hollow-dependent fauna, and the availability of medium-sized, developing *Eucalyptus* trees capable of supporting chainsaw hollows. The five reserves varied in size and dominant vegetation type (Table 1).

The Greater Melbourne region experiences a Mediterranean climate: temperatures range from a mean monthly maximum of 26.9°C in February to a mean monthly minimum of 5.6°C in July, but can exceed 40°C during summer and occasionally falls below 0°C during winter (Australian Bureau of Meteorology 2020).

Tree Selection and Chainsaw-Hollow Installation

Mechanically excavating cavities into live trees can reduce the structural integrity of trunks and branches, potentially resulting in tree failures, that is stem breakages occurring at the location where an artificial cavity has been excavated (Carey &

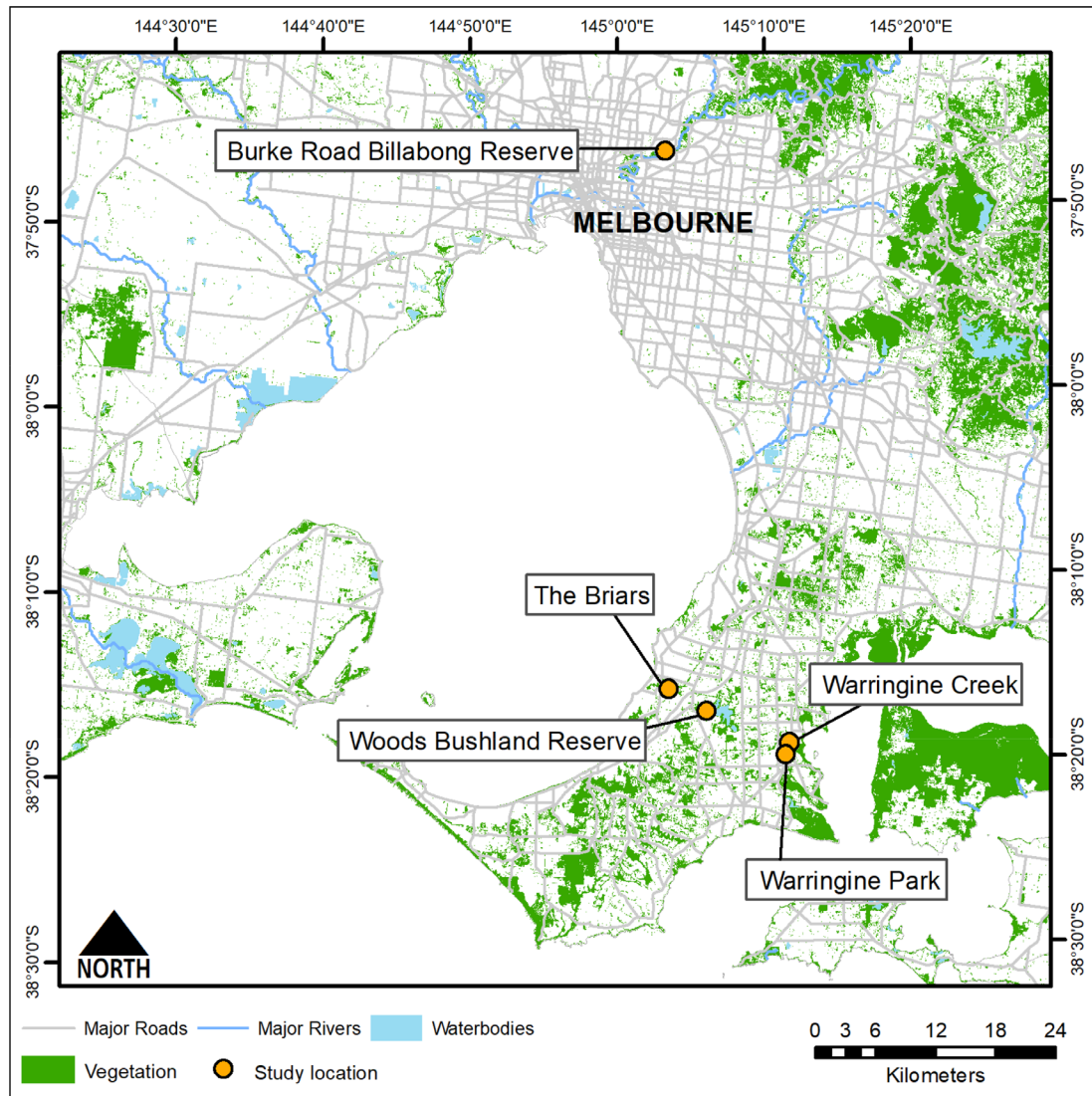


Figure 1 Location of the five reserves across Greater Melbourne, Victoria, south-eastern Australia, where chainsaw-carved hollows were installed in the trunks of live, developing *Eucalyptus* trees.

Table 1 Details of the five reserves. Ecological vegetation classes (EVCs) at each reserve include: floodplain riparian woodland (FRP), swampy riparian woodland (SRW), grassy woodland (GW), and lowland forest (LF) (Brereton et al. 2004).

Reserve	Size (ha)	EVCs	Dominant <i>Eucalyptus</i> spp.
Burke Road Billabong	10	FRP	River red gum <i>E. camaldulensis</i>
The Briars	89	SRW, GW	Manna gum <i>E. viminalis</i> ; messmate <i>E. obliqua</i> ; peppermint gum <i>E. radiata</i>
Warringine Creek	25	SRW, GW	Manna gum; swamp gum <i>E. ovata</i>
Warringine Park	15	LF	Messmate; peppermint gum; swamp gum
Woods Bushland Reserve	56	SRW, GW, LF	Messmate; peppermint gum; swamp gum

Sanderson 1981; Carey & Gill 1983; Gano & Mosher 1983; Hooper et al. 2004; Lumsden et al. 2016). To reduce the probability of this occurring we employed a two-stage systematic risk assessment procedure (Griffiths et al. 2018). First, we consulted specialized arborists and the managers of the five study sites to select live, healthy trees that were located in areas within the

reserves that, in the event of failures, posed a negligible risk to the public (Griffiths et al. 2018). Second, we used an empirical strength loss formula (described below) to calculate the minimum stem diameter required to safely accommodate chainsaw hollows (with pre-determined dimensions) into the trunks of live trees (Griffiths et al. 2018).

In this study, we focused on *Eucalyptus* trees, because they occur widely throughout the Australian continent, and many species compartmentalize damage caused by natural processes (e.g. fire scarring, branch abscission, and slow decay caused by fungal attack and termites) resulting in the gradual formation of hollows (Gibbons & Lindenmayer 2002). Our intention was to create cavities that would remain as structural features of medium-sized trees, which had not already developed natural hollows, for the standing life of the trees.

Trees allocated for chainsaw hollow installation were selected based on their ability to support an internal cavity with a diameter of approximately 20 cm and a circular entrance hole with a diameter of 35 mm. These dimensions were designed to replicate the characteristics of artificial hollows previously used by small marsupial gliders (e.g. Sugar glider *Petaurus breviceps*; Beyer & Goldingay 2006). However, small adjustments to the diameter of the entrance hole and internal cavity dimensions would likely enable use by a range of hollow-dependent mammals and birds (Kunz & Lumsden 2003; Goldingay 2009, 2011). Using the percentage strength-loss (%SL) formula from Smiley and Fraedrich (1992), we calculated that a minimum stem diameter of 30 cm (at the point of chainsaw hollow excavation) was required to reduce the likelihood of stem failures to within an acceptable risk level (i.e. predicted %SL of <30%). To further reduce the risk of tree failures we cut hollows in trees with a trunk diameter ≥ 40 cm (Griffiths et al. 2018). The trees we selected for chainsaw hollow installation had a mean (\pm SD) diameter at breast height (DBH) of 63.4 ± 10.3 cm (range 45–76 cm; Fig. S1), including bark, and a mean stem diameter at the location where the cavity was carved (4–5 m above the ground) of 52.3 ± 10.9 cm (range 40–72 cm), which resulted in a mean predicted %SL of 15.3 ± 6.6 (range 6.6–28.3; Table 2).

The %SL formula used in this study was developed based on decay that forms in tree stems over many years (Smiley & Fraedrich 1992), as opposed to the manual excavation of tissue from the cambium and heart wood that takes approximately 1 hour

when a chainsaw hollow is created. No studies have empirically tested the maximum cavity sizes that can be carved into tree trunks or branches without compromising structural integrity and causing stem failure. Consequently, caution should be taken when using these formulae to assess the risk of a mechanically created hollow causing a stem failure (Kane et al. 2001; Bond 2006; Griffiths et al. 2018). At the time of publication (approximately 4 years post-installation), no failures had occurred in any of the tree trunks in which we carved chainsaw hollows.

Experimental Design

We used a BACI study design (Underwood 1994) to compare changes in activity of free-ranging animals at each site pre- and post-cutting, although these analyses required a pseudo-BACI design due to data constraints (see below). Prior to cutting chainsaw hollows, several sites with a radius of approximately 60 m were selected within each reserve. At each site, three live *Eucalyptus* trees were selected for fauna activity monitoring: one mature tree containing natural hollows and two medium-sized, developing trees without natural hollows. The presence or absence of tree hollows was determined via ground-based surveys; we acknowledge that observers using this method may have missed some hollows (Harper et al. 2004). The candidate tree selection process produced a total of 60 trees across all sites and reserves: 24 messmate (*Eucalyptus obliqua*), 16 manna gum (*Eucalyptus viminalis*), 12 river red gum (*Eucalyptus camaldulensis*), 5 peppermint gum (*Eucalyptus radiata*), and 3 swamp gum (*Eucalyptus ovata*). We had no a priori expectation of different visitation responses between the eucalypt species included within this study, nor did we design this experiment to test these differences; therefore we pooled data across tree species for the analysis. Of the 60 trees included in this study, 13 were used for chainsaw hollows (Table 2), 21 had natural hollows, and 26 were control trees. Trees with natural hollows were necessarily larger than control and

Table 2 Details of the 13 medium-sized, developing *Eucalyptus* trees that were selected for chainsaw hollow installation. Diameter at breast height (DBH) was measured at a height of approximately 1.5 m above the ground. ‘‘Trunk diameter’’ refers to the stem diameter at the location where the chainsaw hollows were installed (4–5 m above the ground). Predicted percentage strength loss (%SL) was calculated for each candidate tree using the formula from Smiley and Fraedrich (1992), which predicts that failure is likely to occur when the amount of wood removed from a stem results in a predicted %SL that is above 30%.

Species	DBH (cm)	Trunk Diameter (cm)	Internal Cavity Dimensions (width \times height \times depth) (cm)	Predicted %SL
<i>E. ovata</i>	68	44	16 \times 26 \times 17	19.7
<i>E. obliqua</i>	74	49	17 \times 25 \times 19	17.3
<i>E. obliqua</i>	57	46	22 \times 23 \times 21	28.3
<i>E. camaldulensis</i>	66	51	19 \times 24 \times 16	11.9
<i>E. camaldulensis</i>	51	40	15 \times 25 \times 18	18.7
<i>E. camaldulensis</i>	54	44	19 \times 23 \times 20	18.1
<i>E. obliqua</i>	45	48	17 \times 24 \times 20	20.3
<i>E. obliqua</i>	76	72	18 \times 20 \times 19	6.9
<i>E. obliqua</i>	73	63	19 \times 25 \times 18	9.2
<i>E. ovata</i>	59	51	19 \times 24 \times 18	14.1
<i>E. viminalis</i>	74	65	18 \times 23 \times 17	6.6
<i>E. radiata</i>	56	40	16 \times 24 \times 19	20.7
<i>E. viminalis</i>	73	68	21 \times 20 \times 18	7.4

chainsaw hollow trees, but control and chainsaw hollow trees had equivalent DBH (see Fig. S1).

Three surveys were undertaken using camera traps to monitor fauna activity. Survey 1 was undertaken from November 2015 to March 2016 to identify fauna activity prior to the introduction of chainsaw hollows. Following Survey 1, at each site, one of the two medium-sized, developing trees that did not have natural hollows was randomly selected and a chainsaw hollow was cut into the trunk (Fig. 2). The remaining developing tree without natural hollows was retained as a control tree. Surveys 2 and 3 were then conducted during October–November 2016 and December–January 2017, respectively, to identify fauna activity 4 and 7 months after chainsaw hollows were installed. The chainsaw hollows created during this project are part of a larger, ongoing study investigating temporal patterns in wildlife use of the different types of natural and artificial hollows, along with documenting changes in tree health and any required maintenance, the findings of which will be presented in a subsequent study.

Camera Trap Surveys

During each survey, we used passive infrared motion-sensing camera traps (ScoutGuard SG550V8-HD and Reconyx HC600 HyperFire) to record the activity of wildlife on each tree treatment at each site continuously for a period of approximately 3 weeks. We programmed camera traps to record during both the day and night, as we expected that the chainsaw hollows

would attract diurnal birds and nocturnal mammals (Gregory et al. 2014; Cotsell & Vernes 2016). Cameras were secured to L-shaped metal brackets that were attached to tree trunks at a height of 5–6 m above the ground (approximately 1 m above the location where a chainsaw hollow was installed), angled to point down the trunk toward (1) the location where chainsaw hollows were installed in treatment trees and (2) the equivalent location on the trunk of hollow-bearing and control trees (i.e. tree treatments without chainsaw hollows; Fig. 2). A series of three photographs were taken per trigger and a 1 minute delay was set between trigger events. Data collected from camera traps were used to quantify changes in activity and allowed us to observe the behavioral response of fauna to chainsaw hollows being installed. Wildlife activity was quantified as daily visitation rates, with a visit defined as a photograph of an animal interacting with the tree trunk at the location of the chainsaw hollow, or the equivalent location on the trunk of hollow-bearing and control trees (see Figs. 2–4). ScoutGuard SG550V8-HD cameras were used for all trees in Survey 1 but produced excessive false triggers. Consequently, for Surveys 2 and 3, Reconyx HyperFire HC600 cameras were used.

Data Analyses

Visitation rate data were collated for two target species groups, hollow-dependent mammals and birds, as well as for the most frequently recorded species: Sugar gliders, Common brushtail possums, Common ringtail possums, and eastern rosellas.



Figure 2 (A) Chainsaw hollows were created by an arborist making angled plunge cuts into the trunk of the tree from a rectangular opening (8 cm wide \times 20 cm high), the internal cavity was approximately 20 cm in diameter across the interior wall. (B) A faceplate made from kiln-dried hardwood was then used to block the opening (Carey & Gill 1983), with a small gap (35 mm in diameter) left above the hollow to allow animals to enter and exit. (C) Passive infrared motion-sensing camera traps were secured to an “L-shaped” bracket that was attached to the tree trunk approximately 1 m above the chainsaw hollow (5–6 m above the ground), with the camera facing down the trunk toward the ground.

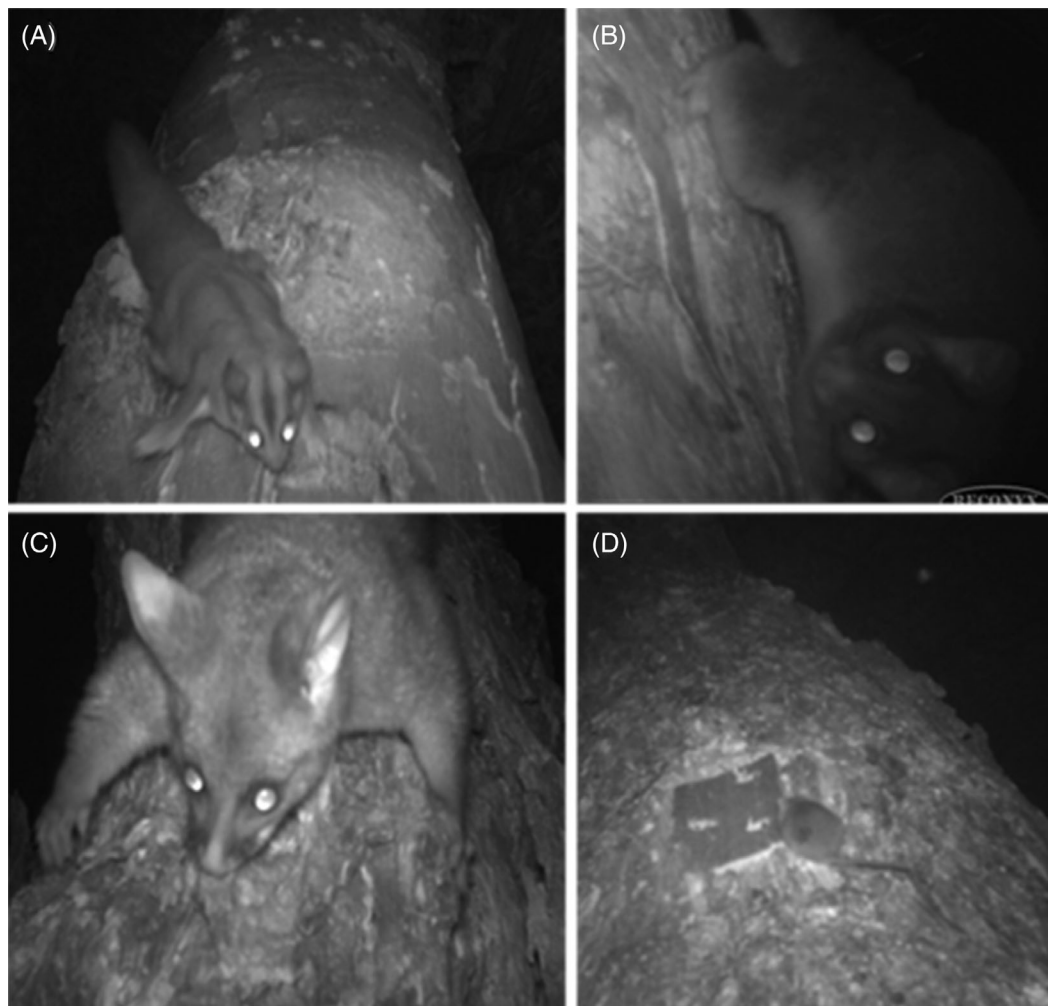


Figure 3 Hollow-dependent arboreal mammal species visiting and inspecting chainsaw hollows carved into developing trees: (A) Sugar glider, (B) Common ringtail possum, (c) Common brushtail possum, and (d) Agile antechinus. All chainsaw hollows were installed at a height of 4 m above the ground. Photographs were taken by passive infrared motion-sensing camera traps that were secured to a bracket that was attached to the tree trunk 1 m above chainsaw hollows (approximate camera height was 5 m above the ground). Camera traps were positioned perpendicular to the tree trunk, facing downwards toward the ground (see Fig. 2C).

Concurrent visits that occurred less than 15 minutes apart were considered likely to be repeat observations of the same individual during the same visit. Statistical analysis was therefore performed on an aggregated dataset where visits occurring within 15 minutes of each other were represented as a single visitation event and the number of visitation events equated to the visitation rate. Statistical analysis was conducted to calculate the effect of treatments on tree visitation rates. Models were constructed only on grouped hollow-dependent mammals because of the high number of zeros (no visit) for single species or birds that prevented comparisons between treatments. All data compilation and analyses were conducted using R version 3.6.0 (R Core Team 2019) through R-Studio (RStudio Team 2015).

A generalized additive mixed model (GAMM) with a negative binomial family specification was used to evaluate the effect of treatments on visitation rates. Given the different camera trap outputs between the before (Survey 1) and after (Survey 2 and 3)

surveys, direct comparisons between before and after surveys were not conducted. The base rate (visitation rate in Survey 1) was instead included as a predictor variable within the GAMM to account for differences prior to treatment. This variable was included as the log of visits in Survey 1 plus one. Survey period and tree treatment (and their interaction) were included as fixed factors, while tree identity and site location were included as random effects. To account for the small variation in the number of days sampled during each survey, visitation data were input to the models as summed visits per survey with log of days in survey included as an offset using the *offset* function in the “stats” package. We ran the model using the *gam* function in the “mgcv” package (Wood 2011).

Post hoc contrasts between treatment factors were conducted on the GAMM using the *emmeans* function in the “emmeans” package (Lenth 2019), with significance level of 0.05. The exponentiated coefficient estimates (minus one) provided the



Figure 4 Hollow-nesting bird species visiting and inspecting chainsaw hollows carved into developing trees: (A) Eastern Rosella, (B) Crimson Rosellas, (C) Laughing Kookaburra, (D) Galah, (E) Rainbow Lorikeets, (F) Wood Duck, and (G) Spotted Pardalote.

Table 3 Summary of total visits (images of a species or species group recorded >15 minutes apart) by all hollow-dependent mammals and birds to each tree treatment during the three survey periods: 1, November 2015 to March 2016; 2, October–November 2016; 3, December–January 2017.

Tree treatment	Survey	Mammals	Birds
Chainsaw hollow	1	14	1
Chainsaw hollow	2	114	121
Chainsaw hollow	3	128	46
Control	1	10	0
Control	2	53	2
Control	3	74	0
Natural hollow	1	31	0
Natural hollow	2	90	13
Natural hollow	3	114	3

proportional increase in the response for that treatment compared to the control, which was then converted to a percentage. Confidence intervals (95%) were calculated as the exponentiated lower and upper bounds—estimated as the coefficient \pm two times standard error.

Results

Over 3,951 camera-trap nights, we recorded 836 tree visitations by fauna, 814 of which were by hollow-dependent taxa: 251 at natural hollow trees, 139 at control trees, and 424 at chainsaw hollow trees (Table 3). Of these, 628 visitations were identified to four species of nocturnal mammals (233 Common brushtail possum *Trichosurus vulpecula*, 216 Sugar glider *P. breviceps*, 157 Common ringtail possum *Pseudocheirus peregrinus*, and 22 Agile antechinus *Antechinus agilis*) (Fig. 3); while 186 visitations were identified to seven species of diurnal hollow-nesting birds (34 Crimson Rosella *Platycercus elegans*, 128 Eastern Rosella *Platycercus eximius*, 9 Rainbow Lorikeet *Trichoglossus moluccanus*, 8 Galah *Eolophus roseicapilla*, 3 Spotted Pardalote *Pardalotus punctatus*, 2 Laughing Kookaburra *Dacelo novaeguineae*, and 2 Wood Duck *Chenonetta jubata*) (Fig. 4). All species recorded visiting trees were generalist species. A full list of species recorded and total visits is provided in Table S2.

Natural hollow, control, and chainsaw hollow trees were all visited and inspected by the same four species of native hollow-dependent arboreal mammals. All seven native hollow-nesting birds visited and inspected chainsaw hollows, compared to four species at natural hollows (Crimson Rosella, Eastern Rosella, Rainbow Lorikeet, Wood Duck) and one species at control trees (Eastern Rosella). Despite introduced hollow-nesting birds being observed at all five reserves during this study (e.g. Common Myna *Acridotheres tristis* and Common Starling *Sturnus vulgaris*), there was no evidence of any exotic hollow-dependent taxa visiting trees.

Across all sites, hollow-dependent mammals had greater visitation rates after treatment (Surveys 2 and 3) for all tree treatment types (Fig. 5). There was a non-significant increase in visitation rate for mammals between Surveys 2 and 3 (mean = 11%, range: –25 to 166, $p = 0.58$) when accounting for variation among reserves and trees. Post hoc contrasts

between treatments indicated a significantly higher visitation rate for trees with chainsaw hollows compared to control trees (mean = 139%, range: 33–329, degrees of freedom [df] = 83.8, $p = 0.011$). These contrasts also indicated non-significant higher rates for natural hollow trees compared to control trees (mean = 24%, range: –27 to 113, $df = 83.8$, $p = 0.70$) and chainsaw hollow trees compared to natural hollow trees (mean = 92%, range: 8 to 242, $df = 83.8$, $p = 0.67$). Hollow-dependent birds had a substantially greater visitation rate on chainsaw hollow trees post-treatment compared to other tree treatments, but the variation in rates among trees was high (Fig. 5). Bird visitation rates on control and natural hollow trees were low across all surveys.

These trends were similar for the most frequently recorded species. However, Sugar gliders appeared to have a greater positive response to chainsaw hollow trees than Common brushtail or Common ringtail possums (Fig. 6). Hollow-dependent bird responses were dominated by Eastern Rosellas, which were much more likely to visit chainsaw hollow trees after treatment than any other trees (Fig. 6). When observing all species collectively, chainsaw hollow trees had a 100% likelihood of post-treatment visitation by hollow-dependent fauna.

Discussion

Mechanically carving artificial cavities into trees with chainsaws is a method gaining popularity in habitat restoration and conservation programs targeting hollow-dependent fauna (Hurley & Stark 2014; Zapponi et al. 2015; Cox & McCormick 2016; Lumsden et al. 2016; Ruegger 2017; Griffiths et al. 2018; Stojanovic et al. 2018). However, little attention has been paid to investigating the initial response of hollow-dependent wildlife to the installation of chainsaw hollows, specifically in terms of the rates at which animals visit trees before and after hollow creation. In our study, we predicted that the addition of chainsaw hollows to live, medium-sized trees would lead to increased visitations by hollow-dependent wildlife. We found that, compared to large hollow-bearing trees and control trees, the medium-sized trees that were selected for chainsaw hollow construction showed the greatest visitation rates by hollow-dependent wildlife (i.e. number of visitations) during the “post-impact” surveys. The high visitation rates to chainsaw hollow trees were species-specific, including greater effects for birds and Sugar gliders. This observed increase in activity could have been caused by repeated visits by individual animals, or by increased activity by multiple individuals (Fiske & Chandler 2011). Visitation rates by hollow-dependent mammals remained high across the second and third surveys that were conducted 4 and 7 months after chainsaw hollows were installed, respectively. This suggests that animals may have been repeatedly returning to chainsaw hollow trees to assess the suitability of these artificial shelter sites as potential nest or den sites (Clement & Castleberry 2013), beyond initial exploratory behavior out of curiosity at a novel feature being introduced into their habitat (Threlfall et al. 2013).

Chainsaw hollows can be designed to more effectively replicate the external physical characteristics of natural hollows than

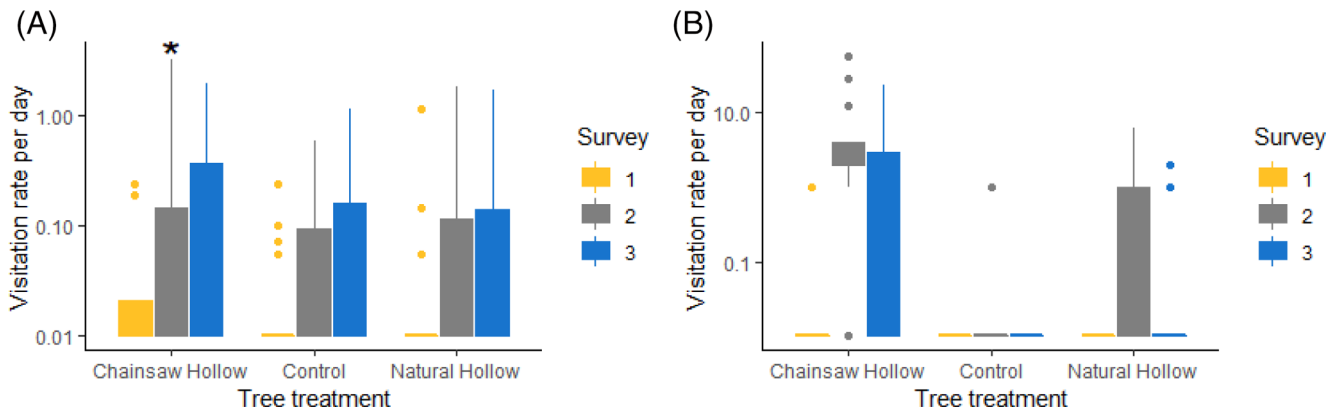


Figure 5 Visitation rate per day (log₁₀ scaled) for: (A) hollow-dependent mammals, and (B) hollow-nesting birds. Asterisk indicates significant effect ($p < 0.05$) compared to control. For each boxplot, the box indicates the range between the first and third quartiles of the data, the whiskers extend up to 1.5× the inter-quartile range, and outliers occur as points beyond those limits.

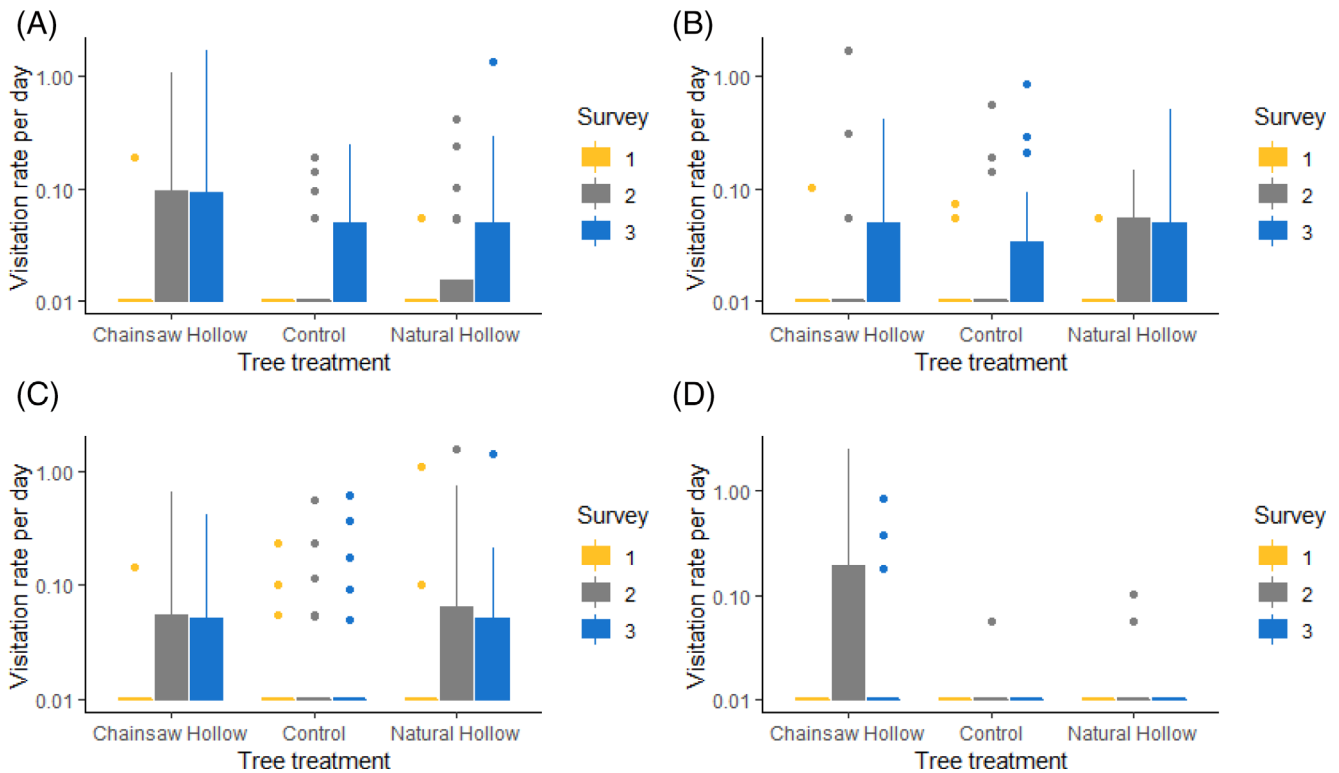


Figure 6 Visitation rate per day (log₁₀ scaled) for: (A) Sugar glider, (B) Ringtail possum, (C) Brushtail possum, and (D) Eastern Rosella. For each boxplot, the box indicates the range between the first and third quartiles of the data, the whiskers extend up to 1.5× the inter-quartile range, and outliers occur as points beyond those limits.

nest boxes (Griffiths et al. 2018). If chainsaw hollows fit a “search image” criteria that hollow-dependent animals use when looking for new tree hollows, then this may reduce the time it takes them to recognize and subsequently use these supplementary shelter sites. The behavioral methods and environmental cues used by hollow-dependent mammals and birds when searching for tree hollows, and investigating them as potential new shelter sites, are largely unknown. There is some evidence that tree-roosting insectivorous bats use a combination of olfaction, visual cues,

and auditory signals produced by conspecifics when searching for and selecting tree roosts (Ruczyński et al. 2007; Furmankiewicz et al. 2011; Ruczyński & Barton 2012). While we do not have any information on how the species observed in this study go about searching for new tree hollows, our results clearly show that a range of hollow-dependent arboreal mammals and birds quickly found and inspected newly installed chainsaw hollows. The mechanism underlying these behaviors is an understudied area that warrants further investigation.

All of the animals that visited and inspected chainsaw hollows during this study were native hollow-dependent species. No introduced pest species that are known to use natural and artificial hollows in human-disturbed landscapes (e.g. Common Myna *A. tristis*, Black rat *Rattus rattus*; Harper et al. 2005; Lindenmayer et al. 2009; Grarock et al. 2013) were recorded visiting chainsaw hollows. These results are consistent with other studies undertaken within timber production forest landscapes in southeastern Australia, where endemic hollow-dependent mammals and birds have been observed to use chainsaw hollows, while no exotic species were recorded (Ruegger 2017; Lumsden et al. 2016). Together, these findings suggest that chainsaw hollows designed to replicate the external physical characteristics of natural hollows could be effective in attracting target fauna to developing trees in regenerating and revegetated landscapes. However, further studies are required that compare the use of natural hollows, chainsaw hollows, and nest boxes installed in a range of human-disturbed landscapes to empirically test the effectiveness of different habitat supplementation techniques in attracting target endemic species versus exotic pests (Griffiths et al. 2018).

Despite the dimensions of chainsaw hollows used in this study being designed for small marsupial gliders, various species of endemic hollow-nesting birds visited and attempted to access the chainsaw hollows (e.g. Crimson Rosella, Eastern Rosella, Rainbow Lorikeet, Striated Pardalote, Wood Duck, and Laughing Kookaburra). These findings contrast with those of Le Roux et al. (2015), where the addition of nest boxes to small- and medium-sized trees did not result in increased activity of hollow-nesting birds at the tree. Furthermore, despite being unable to fit through the 35 mm entrance holes used in this study, Crimson Rosellas, Eastern Rosellas, and Rainbow Lorikeets all made repeated efforts to widen the entrance to gain access to the chainsaw hollows. Therefore, hollow-nesting bird species that investigated the chainsaw hollows during this study may have occupied them if they were not restricted by the entrance size.

In this study, we have provided evidence that chainsaw hollows added to developing trees that previously did not provide shelter sites increased visitations by hollow-dependent mammals and birds. Further long-term field studies are required to test the effectiveness of this novel habitat supplementation technique in providing suitable shelter sites for hollow-dependent wildlife in a range of human-disturbed landscapes (e.g. agricultural or timber production forests). Of particular interest would be studies comparing temporal patterns in wildlife use of natural tree hollows, nest boxes, and chainsaw hollows, and testing whether occupancy of these different shelter structures results in variation in the fitness of hollow-dependent fauna (see Goldingay 2017; Norris et al. 2018). However, where possible, the retention of mature, hollow-bearing trees, and further recruitment of new trees should be the primary objective of conservation and management programs targeting hollow-dependent wildlife in disturbed landscapes (Manning et al. 2006; Lindenmayer 2017).

Acknowledgments

We thank lead arborist M. Cashmore and the team from Tretec Arboriculture and Ecology for their skill and precision in

creating the chainsaw-carved hollows. We also thank J. Gun and J. Ricciardello (Mornington Peninsula Shire), and S. Barker (Burke Road Billabong Reserve Management Committee), for facilitating access to field sites and providing field equipment, plus all the volunteers that assisted in field surveys. This study was funded by the Australian Government's National Land Care Program (grant to S.R.G. and S.J.W.) and the Holsworth Wildlife Research Endowment (grant to S.R.G.). S.R.G. was supported by an Australian Government Research Training Program Scholarship. Fieldwork was carried out under permits from La Trobe University Animal Ethics Committees (Ethics Permit AEC17-72) and the Department of Environment, Land, Water and Planning, Victoria, Australia (Research Permit 10008007). We thank B. Fanson for statistical advice and for review of the draft manuscript.

LITERATURE CITED

- Allen DH (1991) Constructing artificial red-cockaded woodpecker cavities. General Technical Report SE-73. U.S. Department of Agriculture, Forest Service, Southeastern Forest Experiment Station, Asheville, North Carolina
- Archibald CL, McKinney M, Mustin K, Shanahan DF, Possingham HP (2017) Assessing the impact of revegetation and weed control on urban sensitive bird species. *Ecology and Evolution* 7:4200–4208
- Australian Bureau of Meteorology (2020) Climate data online. <http://www.bom.gov.au/climate/data/> (accessed 11 Mar 2020)
- Bennett AF, Lumsden LF, Nicholls AO (1994) Tree hollows as a resource for wildlife in remnant woodlands: spatial and temporal patterns across the northern plains of Victoria, Australia. *Pacific Conservation Biology* 1: 222–235
- Beyer GL, Goldingay RL (2006) The value of nest boxes in the research and management of Australian hollow-using arboreal marsupials. *Wildlife Research* 33:161–174
- Bond J (2006) Foundations of tree risk analysis: use of the t/R ratio to evaluate trunk failure potential. *Arborist News* 15:31–34
- Brereton R, Schulz M, Mansergh I, Sandiford K, Bennett S (2004) Sites of zoological significance of South East Melbourne and the Mornington Peninsula – a compendium of information collected between 1987 and 1991. In: Macak PV, Loyn RH (eds) Arthur Rylah Institute for Environmental Research Technical Report Series No. 92. Department of Sustainability and Environment, Heidelberg, Victoria, Australia
- Carey AB, Gill JD (1983) Direct habitat improvements – some recent advances. Pages 80–87. In: Davis J, Goodwin G, Ockerfells R (eds) Snag habitat management: proceedings of a symposium. US Forest Service Technical Report RM-99. US Forest Service, Washington D.C.
- Carey AB, Sanderson HR (1981) Routing to accelerate tree-cavity formation. *Wildlife Society Bulletin* 9:14–21
- Carvalho F, Carvalho R, Mira A, Beja P (2014) Use of tree hollows by a Mediterranean forest carnivore. *Forest Ecology and Management* 315:54–62
- Clement MJ, Castleberry SB (2013) Tree structure and cavity microclimate: implications for bats and birds. *International Journal of Biometeorology* 57:437–450
- Cockle KL, Martin K, Drever MC (2010) Supply of tree-holes limits nest density of cavity-nesting birds in primary and logged subtropical Atlantic forest. *Biological Conservation* 143:2851–2857
- Copeyon CK (1990) A technique for constructing cavities for the red-cockaded woodpecker. *Wildlife Society Bulletin* 18:303–311
- Cotsell N, Vernes K (2016) Camera traps in the canopy: surveying wildlife at tree hollow entrances. *Pacific Conservation Biology* 22:48–60
- Cox JA, McCormick JK (2016) New insights from an attempt to reintroduce red-cockaded woodpeckers in northern Florida. *Journal of Field Ornithology* 87:360–370

- Fischer J, Zerger A, Gibbons P, Stott J, Law BS (2010) Tree decline and the future of Australian farmland biodiversity. *Proceedings of the National Academy of Sciences of the United States of America* 107:19597–19602
- Fiske IJ, Chandler RB (2011) Unmarked: an R package for fitting hierarchical models of wildlife occurrence and abundance. *Journal of Statistical Software* 43:1–23
- Furmankiewicz J, Ruczyński I, Urban R, Jones G (2011) Social calls provide tree-dwelling bats with information about the location of conspecifics at roosts. *Ethology* 117:480–489
- Gano RD, Mosher JA (1983) Artificial cavity construction: an alternative to nest boxes. *Wildlife Society Bulletin* 11:74–76
- Gibbons P, Lindenmayer DB (2002) Tree hollows and wildlife conservation in Australia. CSIRO Publishing, Melbourne, Australia
- Goldingay RL (2009) Characteristics of tree hollows used by Australian birds and bats. *Wildlife Research* 36:394–409
- Goldingay RL (2011) Characteristics of tree hollows used by Australian arboreal and scansorial mammals. *Australian Journal of Zoology* 59:277–294
- Goldingay RL (2017) Does nest box use reduce the fitness of a tree-cavity dependent mammal? *Ecological Research* 32:495–502
- Goldingay RL, Ruegger NN, Grimson MJ, Taylor BD (2015) Specific nest box designs can improve habitat restoration for cavity-dependent arboreal mammals. *Restoration Ecology* 23:482–490
- Goldingay RL, Thomas KJ, Shanty D (2018) Outcomes of decades long installation of nest boxes for arboreal mammals in southern Australia. *Ecological Management & Restoration* 19:204–211
- Grarock K, Lindenmayer DB, Wood JT, Tidemann CR (2013) Does human-induced habitat modification influence the impact of introduced species? A case study on cavity-nesting by the introduced common myna (*Acridotheres tristis*) and two Australian native parrots. *Environmental Management* 52:958–970
- Gregory T, Rueda FC, Deichmann H, Kolowski J, Alonso A (2014) Arboreal camera trapping: taking a proven method to new heights. *Methods in Ecology and Evolution* 5:443–451
- Griffiths SR, Bender R, Godinho LN, Lenti PE, Lumsden LF, Robert KA (2017) Bat boxes are not a silver bullet conservation tool. *Mammal Review* 47: 261–265
- Griffiths SR, Lentini PE, Semmens K, Watson SJ, Lumsden LF, Robert KA (2018) Chainsaw-carved cavities better mimic the thermal properties of natural tree hollows than nest boxes and log hollows. *Forests* 9:235
- Griffiths SR, Rowland JA, Briscoe NJ, Lentini PE, Handasyde KA, Lumsden LF, Robert KA (2017) Surface reflectance drives nest box temperature profiles and thermal suitability for target wildlife. *PLoS One* 12:e0176951
- Harper MJ, McCarthy MA, Van Der Ree R (2005) The use of nest boxes in urban natural vegetation remnants by vertebrate fauna. *Wildlife Research* 32: 509–516
- Harper MJ, McCarthy MA, Van Der Ree R, Fox JC (2004) Overcoming bias in ground-based surveys of hollow-bearing trees using double-sampling. *Forest Ecology and Management* 190:291–300
- Hooper RG, Taylor WE, Loeb SE (2004) Long-term efficacy of artificial cavities for red-cockaded woodpeckers: lessons learned from Hurricane Hugo. Pages 430–438. In: Costa R, Daniels Susan J (eds) Red-cockaded woodpecker. Road to recovery. Hancock House Publishers, Blaine, Washington
- Hurley VG, Harris G (2014) Simulating natural cavities in Slender cypress pine (*Callitris gracilis murrayensis*) for use by Major Mitchell's Cockatoo (*Lophochroa leadbeateri leadbeateri*): a report to the Department of Environment and Primary Industries. Department of Environment and Primary Industries, Victoria, Melbourne, Australia
- Hurley VG, Stark EM (2015) Characteristics and uptake of simulated natural cavities for Major Mitchell's Cockatoo (*Lophochroa leadbeateri leadbeateri*) in Slender Cypress-pine. Department of Environment, Land, Water and Planning, Victoria, Melbourne
- Hussain I, Abbasi S, Mirza SN, Anwar M, Rais M, Mahnood T (2013) Tree cavities and associated vertebrate fauna in a coniferous forest of Dhirkot, Azad Jammu and Kashmir part of Pakistan. *Turkish Journal of Zoology* 37: 647–658
- Kane B, Ryan D, Bloniarz DV (2001) Comparing formulae that assess strength loss due to decay in trees. *Journal of Arboriculture* 27:78–87
- Kunz TH, Lumsden LF (2003) Ecology of cavity and foliage roosting bats. Pages 3–89. In: Kunz TH, Fenton MB (eds) Bat ecology. University of Chicago Press, Chicago, Illinois
- Lambrechts MM, Adriaenssens F, Ardia DR, Artemyev AV, Atiénzar F, Ba Bura J, et al. (2010) The design of artificial nestboxes for the study of secondary hole-nesting birds: a review of methodological inconsistencies and potential biases. *Acta Ornithologica* 45:1–26
- Le Roux DS, Ikin K, Lindenmayer DB, Bistricker G, Manning AD, Gibbons P (2015) Enriching small trees with artificial nest boxes cannot mimic the value of large trees for hollow-nesting birds. *Restoration Ecology* 24: 252–258
- Le Roux DS, Ikin K, Lindenmayer DB, Bistricker G, Manning AD, Gibbons P (2016) Effects of entrance size, tree size and landscape context on nest box occupancy: considerations for management and biodiversity offsets. *Forest Ecology and Management* 366:135–142
- Le Roux DS, Ikin K, Lindenmayer DB, Blanchard W, Manning AD, Gibbons P (2014) Reduced availability of habitat structures in urban landscapes: implications for policy and practice. *Landscape and Urban Planning* 125: 57–64
- Lenth R (2019). emmeans: estimated marginal means, aka least-squares means. R package version 1.3.4. <https://CRAN.R-project.org/package=emmeans>
- Lindenmayer DB (2017) Conserving large old trees as small natural features. *Biological Conservation* 211:51–59
- Lindenmayer DB, Crane M, Blanchard W, Okada S, Montague-Drake R (2015) Do nest boxes in restored woodlands promote the conservation of hollow-dependent fauna? *Restoration Ecology* 24:244–251
- Lindenmayer DB, Laurance WF (2017) The ecology, distribution, conservation and management of large old trees. *Biological Reviews* 92:1434–1458
- Lindenmayer DB, Wels A, Donnell C, Crane M, Michael D, Macgregor C, McBurney L, Montague-Drake R, Gibbons P (2009) Are nest boxes a viable alternative source of cavities for hollow-dependent animals? Long-term monitoring of nest box occupancy, pest use and attrition. *Biological Conservation* 142:33–42
- Liu J, Lindenmayer DB, Yang W, Ren Y, Campbell M, Wu C, Luo Y, Zhong L, Yu M (2019) Diversity and density patterns of large old trees in China. *Science of the Total Environment* 655:255–262
- Lumsden LF, Powell C, Cashmore M (2016) Successfully creating new hollows for the critically endangered Leadbeater's Possum. In: *Abstracts from the Australian Mammal Society conference*, Alice Springs, September 2016
- Manning AD, Fischer J, Lindenmayer DB (2006) Scattered trees are keystone structures - implications for conservation. *Biological Conservation* 132: 311–321
- McBride JR, Jacobs DF (1986) Presettlement forest structure as a factor in urban forest development. *Urban Ecology* 9:245–266
- Mering ED, Chambers CL (2014) Thinking outside the box: a review of artificial roosts for bats. *Wildlife Society Bulletin* 38:741–751
- Munks SA, Koch AJ, Wapstra M (2009) From guiding principles for the conservation of forest biodiversity to on-ground practice: lessons from tree hollow management in Tasmania. *Forest Ecology and Management* 258:516–524
- Newton I (1994) The role of nest sites in limiting the numbers of hole-nesting birds: a review. *Biological Conservation* 70:265–276
- Norris AR, Aitken KEH, Martin K, Pokorny S (2018) Nest boxes increase reproductive output for tree swallows in a forest grassland matrix in Central British Columbia. *PLoS One* 13:e0204226
- Quinto J, Micó E, Martínez-Falcón AP, Galante E, Marcos-García MA (2014) Influence of tree hollow characteristics on the diversity of saproxylic insect guilds in Iberian Mediterranean woodlands. *Journal of Insect Conservation* 5:981–992
- R Core Team (2019) R: a language and environment for statistical computing. R Foundation for Statistical Computing, Vienna, Austria. <https://www.R-project.org/>
- RStudio Team (2015) RStudio: integrated development for R. RStudio, Inc., Boston, MA. <http://www.rstudio.com/>

- Ruczyński I, Barton KA (2012) Modelling sensory limitation: the role of tree selection, memory and information transfer in bats' roost searching strategies. *PLoS One* 7:e44897
- Ruczyński I, Kalko EKV, Siemers BM (2007) The sensory basis of roost finding in a forest bat, *Nyctalus noctula*. *Journal of Experimental Biology* 210: 3607–3615
- Ruegger N (2017) Artificial tree hollow creation for cavity-using wildlife – Trialling an alternative method to that of nest boxes. *Forest Ecology and Management* 405:404–412
- Saenz D, Conner RN, Collins CS, Rudolph DC (2001) Initial and long-term use of inserts by red-cockaded woodpeckers. *Wildlife Society Bulletin* 29: 165–170
- Shanahan DF, Miller C, Possingham HP, Fuller RA (2011) The influence of patch area and connectivity on avian communities in urban revegetation. *Biological Conservation* 144:722–729
- Smiley TE, Fraedrich BR (1992) Determining strength loss from decay. *Journal of Aborigiculture* 18:201–204
- Stojanovic D, Cook HCL, Sato C, Alves F, Harris G, McKernan A, Rayner L, Webb MH, Sutherland WJ, Heinsohn R (2018) Pre-emptive action as a measure for conserving nomadic species. *Journal of Wildlife Management* 83:64–71
- Threlfall C, Law BS, Banks PB (2013) Odour cues influence predation risk at artificial bat roosts in urban bushland. *Biology Letters* 9:20121144
- Treby DL, Castley JG (2015) Distribution and abundance of hollow-bearing trees in urban forest fragments. *Urban Forestry & Urban Greening* 14: 655–663
- Underwood AJ (1994) On beyond BACI: sampling designs that might reliably detect environmental disturbances. *Ecological Applications* 4:3–15
- Vesk PA, Mac Nally R (2006) The clock is ticking – revegetation and habitat for birds and arboreal mammals in rural landscapes of southern Australia. *Agriculture, Ecosystems & Environment* 112:356–366
- Vesk PA, Nolan R, Thomson JR, Dorrrough JW, MacNally R (2008) Time lags in provision of habitat resources through revegetation. *Biological Conservation* 141:174–186
- Warakai D, Okena DS, Igag P, Opiang M, Mack AL (2013) Tree cavity-using wildlife and the potential of artificial nest boxes for wildlife management in New Guinea. *Tropical Conservation Science* 6:711–733
- Wood SN (2011) Fast stable restricted maximum likelihood and marginal likelihood estimation of semiparametric generalized linear models. *Journal of the Royal Statistical Society (B)* 73:3–36
- Zapponi L, Minari E, Longo L, Toni I, Mason F, Campanaro A (2014) The habitat-trees experiment: using exotic tree species as new microhabitats for the native fauna. *iForest – Biogeoscience and Forestry* 8: 464–470

Supporting Information

The following information may be found in the online version of this article:

Table S1. Summary of studies investigating mechanically excavated tree hollows.

Table S2. Summary of total visitations by all species to all tree treatments.

Figure S1. Diameter at breast height (DBH) of all trees in each treatment category.

Coordinating Editor: John Isanhart

Received: 13 January, 2020; First decision: 21 February, 2020; Revised: 28 April, 2020; Accepted: 28 April, 2020

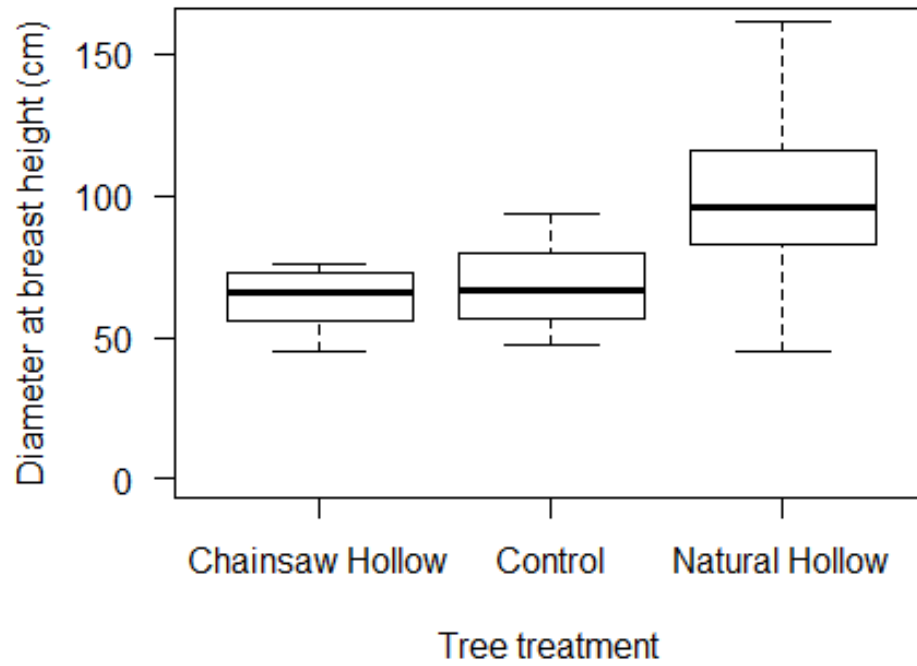


Figure S1. Diameter at breast height (DBH) of all trees in each treatment category.

Table S1. Summary of studies investigating mechanically excavated tree hollows.

Reference / Country	Cavity description	Results
Carey and Sanderson (1981) / USA	139 triangular-shaped cavities drilled into the trunks of live Red maple (<i>Acer rubrum</i>), Red oak (<i>Quercus rubra</i>), and White oak (<i>Quercus alba</i>). Design characteristics: three holes 3.8 cm in diameter, two holes 15 cm deep and one 12 cm deep, with the remaining wood between holes removed.	Over 48 months: 82% of cavities were used by a range of invertebrates, 80% of cavities were used as dens by Southern flying-squirrels (<i>Glaucomys volans</i>) 2% by White-footed mice (<i>Peromyscus leucopus</i>), and 4% were used as nest sites by birds (species not specified); 18% of the drilled holes had callused shut; 3% of drilled tree trunks had failed.
Carey and Gill (1983) / USA	55 cavities carved into the trunks of dead trees (species not specified) with chainsaws. Design characteristics: a rectangular-shaped hole carved into the tree, then four plunge cuts used to excavate a cavity, which is sealed with a pre-made wood faceplate; dimensions of cavity and faceplate not described.	Over 24 months: 80% of cavities used by Mountain bluebirds (<i>Sialia currucoides</i>), House wrens (<i>Troglodytes aedon</i>) and Red-breasted nuthatch (<i>Sitta canadensis</i>) (numbers not specified). No data presented on rates of tree failure.
Gano and Mosher (1983) / USA	40 cavities carved with chainsaws into the trunks of live Chestnut oak (<i>Quercus prinus</i>). Design characteristics: faceplate cut from the tree with a 3.8 cm wide entrance hole; cylindrical cavities with approximate volume of 2650 cm ³ .	Over 12 months: six cavities used by Southern flying-squirrels, one by White-footed mice, and one by White-breasted nuthatches (<i>Sitta carolinensis</i>). Fifteen tree trunks (37.5%) failed within one year.
Copeyon (1990) / USA	44 cavities designed for Red-cockaded woodpeckers drilled into the trunks of live longleaf pine. Design characteristics: 5.1 cm wide entrance hole, cylindrical cavity with approximate volume of 500 cm ³ .	Over 21 months: 35 cavities (80%) were used by Red-cockaded woodpeckers. No tree trunks failed, however considerable maintenance was required to control sap production.

Reference / Country	Cavity description	Results
Allen (1991) / USA	308 cavities carved with chainsaws into the trunks of live pine trees (<i>Pinus</i> spp.); a pre-made wood box designed for Red-cockaded woodpeckers was inserted into the cavity. Design characteristics: 4.5 cm wide entrance hole, cylindrical cavity with approximate volume of 1000 cm ³ .	Over 24 months: 60% of cavities were used by Red-cockaded woodpeckers. No tree trunks failed.
Saenz <i>et al.</i> (2001) / USA	70 cavities carved with chainsaws into the trunks of live pine (<i>Pinus</i> spp.); a pre-made wood box designed for Red-cockaded woodpeckers was inserted into the cavity. Design characteristics: 4.5 cm wide entrance hole, cylindrical cavity with approximate volume of 1000 cm ³ .	Over 16 years: 82% of cavities were used by Red-cockaded woodpeckers. No data on trunk failures were reported.
Hooper <i>et al.</i> (2004) / USA	443 cavities drilled in the trunks of live pine trees (<i>Pinus</i> spp.). Four designs used based on those developed by Copeyon (1990), Allen (1991), and Saenz (2001).	Over eight years: all four cavity types were used by Red-cockaded woodpeckers at varying rates. Six tree trunks failed.
Hurley and Stark (2015) / Australia	24 cavities designed for Major Mitchell's cockatoo (<i>Lophochroa leadbeateri</i>) carved with chainsaws into the trunks of live and also dead Slender cypress pine (<i>Callitris columellaris</i>) (numbers of hollows carved into live versus dead trees were not stated). Design characteristics: 13 by 22 cm wide entrance hole, cylindrical cavity equal to a median volume of approximately 2179 cm ³	Over 12 months: four cavities (16%) were occupied by Major Mitchell's cockatoo, eight cavities (33%) Galah (<i>Eolophus roseicapilla</i>) and one cavity by Australian kestrel (<i>Falco cenchroides</i>). No tree trunks failed.

Reference / Country	Cavity description	Results
Zapponi <i>et al.</i> (2015) / Italy	112 cavities designed for secondary cavity-nesting birds were cut into the trunks of live Plane trees (<i>Platanus acerifolia</i>) at heights ranging from 1–4 m. Design characteristics: faceplate cut from tree, cube-shaped cavities of six sizes were installed ranging in volume from 3600 cm ³ to 40320 cm ³ ; different sized entrance holes were drilled (sizes not specified).	Over eight years: 87 (80%) of the cavities were occupied at least once by target bird species. 20 (18%) tree trunks failed; 26 (23%) of the trees died.
Cox and McCormick (2016) / USA	154 cavities carved with chainsaws into the trunks of live pine trees (<i>Pinus</i> spp.); a pre-made wood box designed for Red-cockaded woodpeckers was inserted into the cavity. Specific design characteristics of cavities not described.	Over nine years: Red-cockaded woodpeckers used the cavities as nest sites; however, specific occupancy rates were not reported. No data on trunk failures were reported.
Lumsden <i>et al.</i> (2016) / Australia	72 cavities were carved into the trunks of live <i>Eucalyptus</i> trees (predominantly Mountain ash, <i>Eucalyptus regnans</i>) targeting Leadbeater's possums. A large internal chamber (approximately 23 cm wide by 26 cm deep and 30 cm high) was created through a 5 cm wide slit, which was then mostly filled with a pre-constructed wooden door, leaving a 4 x 5 cm hole at the top.	Within the first 12 months Leadbeater's possums had occupied 37 (51%) of hollows. Three trees had failed during the first 12 months: all were very small diameter trees.
Ruegger (2017) / Australia	16 cavities carved with chainsaws into the trunks of live trees (various <i>Eucalyptus</i> spp.). Design characteristics: faceplate cut from the tree as per Gano & Mosher (1983); entrance holes varied in size from 3.8 cm (11 cavities) to 7.6 cm (5 cavities); cavity volume varied from 2754–11200 cm ³ .	Over 15 months: five species used the cavities, Feathertail glider (75% of cavities), Brown antechinus (75%), Sugar glider (63%), Long-eared bat (50%), and White-throated treecreeper (25%). No tree trunks failed.

Reference / Country	Cavity description	Results
Stojanovic <i>et al.</i> (2018) / Australia	59 cavities carved into the branches of live <i>Eucalyptus</i> trees (Blue gum and White peppermint). Design characteristics: faceplate cut from the tree as per Gano & Mosher (1983); internal dimensions were 45 × 15 × 15 cm, with a 5 cm entrance hole.	Over six months: Swift parrots used two (3%) chainsaw hollows. No information given about tree failures.

Table S2. Summary of total visitations by all species to all tree treatments.

Species	Total visits	Mean visitation rate	Hollow-dependent
Mammals			
Agile antechinus	22	0.0051	Y
Brush-tail possum	233	0.0602	Y
Koala	4	0.0009	N
Ringtail possum	157	0.0395	Y
Sugar glider	216	0.0517	Y
Birds			
Blackbird	1	0.0002	N
Crimson rosella	34	0.0086	Y
Eastern rosella	128	0.0320	Y
Galah	8	0.0019	Y
Grey shrike-thrush	3	0.0010	N
Laughing kookabura	2	0.0005	Y
Little wattlebird	1	0.0003	N
Nocturnal raptor	1	0.0002	N
Noisy minor	4	0.0010	N
Pied butcherbird	1	0.0003	N
Rainbow lorikeet	9	0.0028	Y
Raven	1	0.0003	N
Spotted pardalote	3	0.0008	Y
Striated thornbill	1	0.0003	N
Unidentifiable bird	1	0.0003	N
Red wattlebird	3	0.0008	N
White-brown scrubwren	1	0.0002	N
Wood duck	2	0.0005	Y

